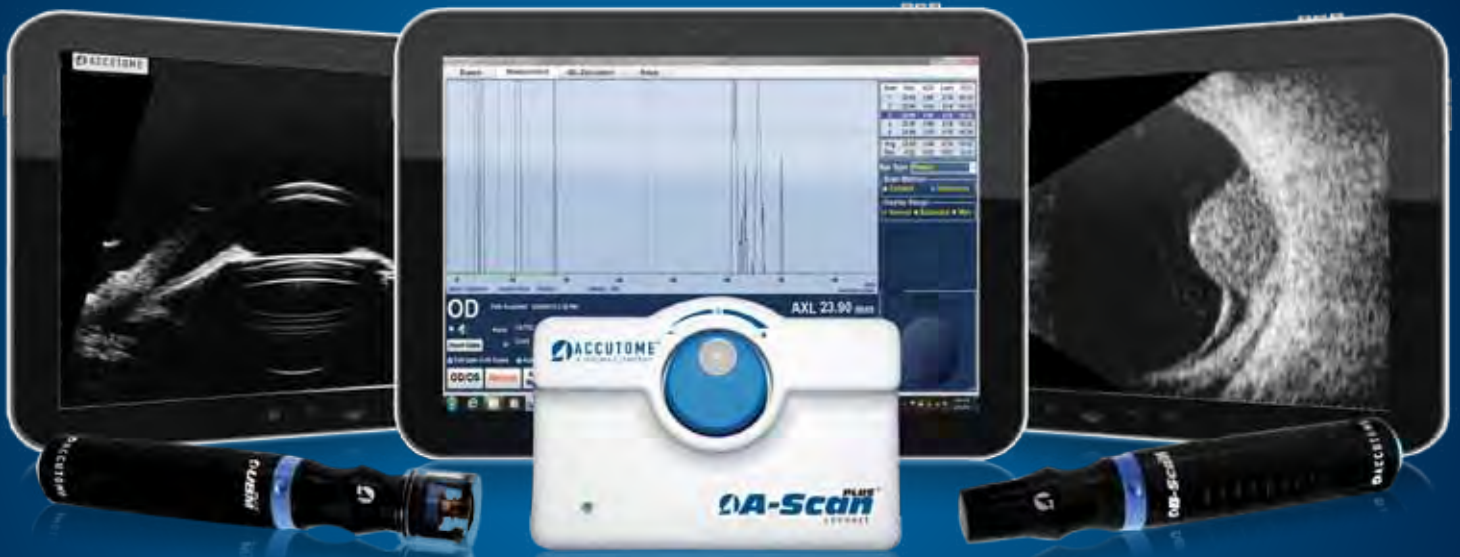




The Connect Platform

A-Scan Plus Connect, B-Scan Plus, and UBM Plus

 **ACCUTOME**[®]
A HALMA COMPANY



About the Connect Platform

The Connect Platform is a powerful and portable diagnostic tool designed to meet the demands of today's ophthalmic practice. The A-Scan, B-Scan and UBM plug directly into a PC, laptop or tablet device and offer adaptable document transfer to meet your changing needs. All of the units easily upload to electronic medical records and patient data can be stored, emailed or printed quickly. Reports are generated with just a few clicks of a button.

Features include an easy-to-use Interface.
Take the connect anywhere with unlimited software

licenses which allow you to load the connect platform software in multiple exam rooms or offices. Protect your investment with easily upgradeable software and streamline your patient data by sharing information between each system.

We place a priority on training your staff – An on site instruction program is offered with every purchase of an A-Scan or UBM Plus. Our dedicated Product Specialists will walk your team through the technology and software so that you get optimum results using the Connect.

B-Scan PLUS[®]



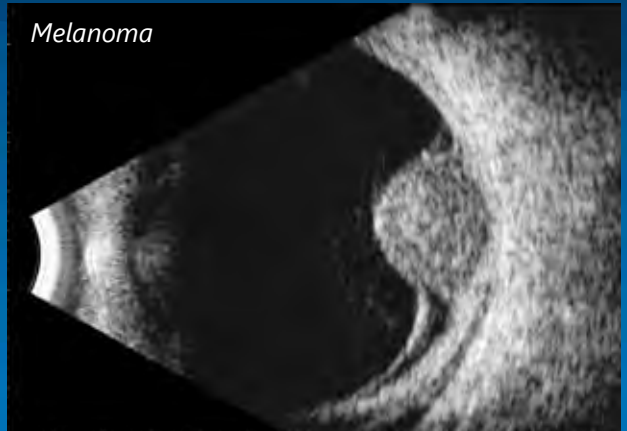
Features:

- Image is Everything – 0.015 mm resolution is the highest in the medical industry.
- Probe Design – Sharper, more focused images due to the elimination of signal loss.
- Unsurpassed Data Analysis – Contains 6 useful measuring calipers.
- “Smooth Zoom” Technology – The only unit with 2x full image zoom without distortion of real-time or captured scan.
- Never Miss an Image – Unlimited 34 second film loops.
- Compact file storage that is unsurpassed by the competition.

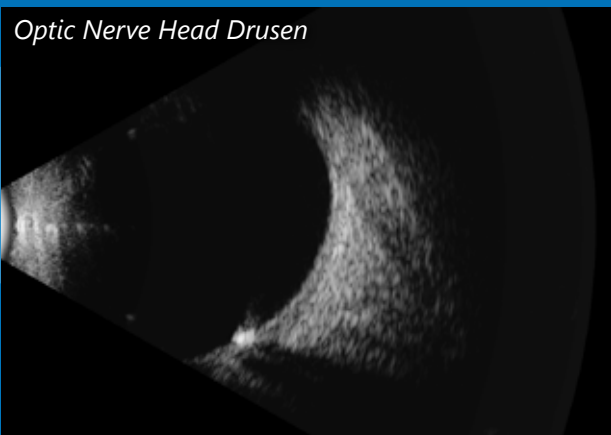
Vitreous Hemorrhage in Vitrectomized Eye With Visible Peripheral Vitreous Skirt



Melanoma



Optic Nerve Head Drusen



Dense Vitreous Hemorrhage





Features:

- High Definition Imaging - Detailed structure definition including cornea, iris, ciliary body, zonules, crystalline lens and intraocular lens, as well as pathologies.
- State-of-the-Art Probe Design - Sharper, more focused images due to the elimination of signal loss.
- Unsurpassed Data Analysis - Contains measuring tools useful for measuring sulcus-to-sulcus, anterior chamber depth, positioning of intraocular lenses and filtration angle of the eye.
- Never Miss an Image - Unlimited 34 second film loops.



UBM of Open Angle



Cyclodialysis Cleft With Ciliary Body Detachment



Ciliary Body Cyst

Product Specifications

Customers are not just buying equipment, they are buying our customer service and support.
All products made and serviced in USA

A-Scan Plus Connect

- PC based platform and non-fee software offer complete portability
- Industry leading resolution
- Faster acquisition time* reducing testing time and increasing patient flow
- Fully upgradeable software with free upgrades; keeping your equipment up-to-date and providing return on investment
- Free training
- Unlimited data storage
- EMR data transfer
- Unlimited IOL Lens groups
- Unlimited customizable lens, ACD and VCD materials for new emerging implant/chamber materials
- Piggyback calculation ability for ICL implant patients
- Rx surgery calculations for an aging Lasik population
- Offering solutions to today's office difficulties by:
 - Easy to set up defaults, smooth customer interface and automatic EMR exports to decrease chair/testing time, increase patient turn around/ increase profit and improve surgical outcomes.

Specifications

Weight: 0.43Kg (15.1 oz.)
Dimensions: 13.75cm X 9.50cm X 6.40cm (5.4" x 3.7" x 2.5")
Methods: Immersion or contact
Default Eye Type Settings: Phakic, Dense Cataract, Silicone Filled, Pseudo PMMA, Pseudo Silicone, Pseudo Acrylic, Aphakic
Custom Eye Type Settings: Unlimited with independent ACD, Lens, VCD velocities.
Measurements: ACD, Lens thickness, VCD, Axial length
Capture Modes: Automatic or Manual
Frequency: 10MHz
Electronic Resolution: .016mm
Clinical Accuracy: .1mm
Data Points per Waveform: 4096
Measurement Range: .01-63.6mm
Adjustable Gain: 30-100dB
IOL Formulas: Hoffer Q, Holladay I, SRK/T, Haigis
Post Refractive Formula Methods: Clinical history, Contact Lens, Shammass Clinical
IOL Data Storage: Unlimited
Patient Data Storage: Unlimited
Data Export: EHR compatible, Network ready
Printer: Any supported by PC
Accessories: USB footswitch, CD containing A-Scan Plus Connect software and manual, test block

B-Scan Plus and UBM Plus

- PC based platform and non-fee software offer complete portability
- Single software for both probes increases patient turnaround by decreasing technological hurdles
- Fully upgradeable software
- EMR capability with automatic transfer of data
- Multiple measuring velocities for ACD/VCD to accommodate complex cases
- 8 measuring calipers
- Microsoft Word™ report base which includes patient demographic, diagnosis and screen shot
- Adjustable cine loop recording
- Integrated TGC
- Fully adjustable gain before, during or after exam which provides more flexibility when reviewing scans
- Data archive
- Offering solutions to today's office difficulties by:
 - Easy to set up defaults, smooth customer interface and automatic EMR exports to decrease chair/testing time, increase patient turn around/ increase profit.

B-Scan Plus Specifications

Weight: 6 oz.
Dimensions: 7" long X 1.25" diameter
Frequency: 12 or 15 MHz
Axial Resolution: .015mm Electronic
Lateral Resolution: .085mm Electronic
Gain: 0-112 dB
Adjustable Gamma: Linear, S-Curve, Log, Color
Scanning Angle: 60°
Field of View: 12 MHz = 64mm or 15 MHz = 52mm
Frame rate per Second: 15, 30 max
Sampling Rate (points per line): 2048
Vectors per Frame: 256
Focal Point: 22mm
Focal Zone: 20mm
TGC: Yes
Frozen Image Gain Adjustment: Yes
Zoom: 2x optical zoom, 8x Maximum
Reports: Integrated Microsoft Word™
Snapshot format: jpeg, bmp, png, tiff, gif
Data archive/Export capability: Yes
Max. number of frames per scan: 256
Size of cine loop: 16-128 MB
Measurement Calipers with velocity adjustment: 4 line, 2 area, 2 angle
Accessories: Durable traveling case, Probe holder, footswitch, wireless mouse

UBM Plus Specifications

Weight: 6 oz.
Dimensions: 7" long X 1.25" diameter
Frequency: 48 MHz
Axial Resolution: .015mm Electronic
Lateral Resolution: .05mm Electronic
Gain: 0-112 dB
Adjustable Gamma: Linear, S-Curve, Log, Color
Scanning Angle: 30°
Field of View: 32mm
Frame Rate per Second: 10
Sampling Rate (points per line): 2048
Vectors per Frame: 256
Focal Point: 13mm
Focal Zone: 4mm
TGC: Yes
Frozen Image Gain Adjustment: Yes
Zoom: 8x Maximum
Reports: Integrated Microsoft Word™
Snapshot format: jpeg, bmp, png, tiff, gif
Data archive/Export capability: Yes
Max. number of frames per scan: 256
Size of cine loop: 16-128 MB
Measurement Calipers with velocity adjustment: 4 line, 2 area, 2 angle
Accessories: Durable traveling case, Probe holder, footswitch, wireless mouse, 18mm and 20mm Immersion shells

*When compared to our previous A-Scans